

a+traction ▶▶
DISTRIBUTION

DRAMA

PRIME TIME
AWARD WINNING

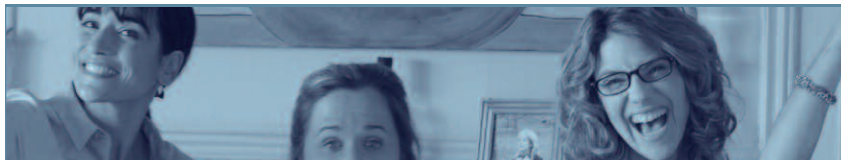


COPPERS

- ▶▶ In an ideal world, when a criminal commits a crime he is punished and his victim compensated. But in real life, justice can be truly blind. Liese Meerhout, the no-nonsense head of the police homicide division, isn't wearing any blindfold, however, and she isn't fooled by appearances. She tickles the drums in her off-hours and when she is on the job she knows just the right notes to play to solve even the most stubborn cases.



BELGIUM, 13 X 60', CRIME



FAMILY MESS

- ▶▶ Picture this: the 90's, four friends get together and decide to write their life aspirations on a piece of paper. They all sign and put the note in a bottle. Fifteen years later, they meet again and decide to break the bottle to read the note again... a rude reality check which reminds them how far they are from their aspirations... until they make the bold decision to achieve one of them: move in together along with their seven children for one year...



CANADA, 62 X 60', DRAMEDY





IN FLANDERS FIELDS



IN FLANDERS FIELDS

- ▶▶ Directed by Jan Mattys and produced by Oscar nominated producer Dirk Impens (*Broken circle breakdown*), this is the most expensive drama ever produced in Flanders. A stellar Belgian cast supported by talent from Britain, France and Germany. In time for the 100th anniversary of the start of WWI.

BELGIUM, 10 X 60', WWI DRAMA



THE PARENTS

- ▶▶ Starting a 7th season in its home market and so far adapted in Poland, Russia, Israel, Spain and Greece, this multi award-winning and international hit success comedy vividly depicts the precarious art of being a modern parent in the 21st century. *The Parents* showcases a family of five whose mother and father often grapple with three sometimes rambunctious boys.

CANADA, 144 X 60', MODERN DAY DRAMEDY



Estelle from Hell



ESTELLE FROM HELL

- ▶▶ A fun series featuring a typical blended family struggling to make things work. It is the story of Erik and his son, Julie and her teenage daughter and Megan, the couple's miracle baby; their family life becomes even more chaotic when, after Erik's dad dies and leaves a huge debt behind, his mom Estelle has no choice but to sell the house and move in with the family... A blessing or a curse?

CANADA, 13 X 30', DRAMA



CRIME IN BRUGES

- ▶ Action takes the upper hand in this grippingly intense and compact crime series. Murder, extortion, prostitution, kidnapping – you name it. For behind the stately facades of Bruges' grand homes and public buildings, are plotting crimes of passion, greed or vengeance. And when crime strikes, one man first on the scene: inspector Pieter van In. CRIME IN BRUGES is a lean, tense series that zips between exciting criminal cases and moving interpersonal stories that provide both thrills and emotional satisfaction.

BELGIUM, 117 X 60', CRIME



CODE 37

- ▶ A high-profile episodic police series with a rich and modern cinematic look, starring a female chief inspector. Young and sexy, our lead character heads a vice squad of male colleagues to fight unusual sex crimes... as she is herself tormented by her own family tragedy.

CRIME SERIES
39 X 60'



VAMPIRE HIGH

- ▶ Growing up is tough, especially when you are dead! Vampire High explores the horror story known as adolescence.

TEEN / FANTASY & ROMANCE, 26 X 30', ENGLISH



BOB GRATTON

- ▶▶ Politically incorrect and with a twisted sense of humour, Bob Gratton is at the center of this comic drama series. Gratton, an Elvis impersonator, portrays a stereotypical mass consumption pro-mainstream citizen who could have been a *Trailer Park Boys* neighbour.

COMEDY
41 X 30'



THE ADVENTURES OF JACK CARTER

- ▶▶ Private detective Jack Carter is nothing if not eccentric: penniless, he lives, eats and sleeps at the office. When it comes to work, he accepts only those rare cases that intrigue him and leave other detectives mystified. No investigation is too strange or unusual to dishearten Carter.

DETECTIVE
8 X 60'



RANDOM PASSAGE

- ▶▶ *Random Passage* tells a tale of love and survival. It is the story of a woman whose one true commitment is to life itself in a place and time where life and death are a hair's breadth apart.

DRAMA / EPIC

8 X 60' OR 4 X 90', ENGLISH



DICE

- ▶▶ This dark thriller pits a determined cop, Patrick Styvesant, against a charismatic predator. Who will win the cat-and-mouse chase between the tormented detective and the sadistic, master manipulator?

PSYCHOLOGICAL THRILLER

6 X 45' OR 2 X 103', ENGLISH



MARGUERITE VOLANT

- ▶▶ Full of liaisons, intrigues, treachery and adventure, *Marguerite Volant* is a sweeping historical epic set in New France (Canada) in 1763. Fighting to save her heritage and her honour as the world crumbles around her, can Marguerite trust the one man most likely to betray her?

DRAMA / COSTUME
11 X 60'



GOLD

- ▶▶ An impossible love story set within the parallel worlds of high finance and the stock market and the high-wire gamble of mineral exploration.

DRAMA
10 X 60'

Émilie

Les filles de Caleb



EMILIE

- ▶▶ Set in a world on the brink of the 20th century, *Emilie* is the unforgettable tale of a young woman whose fiery spirit evokes the indomitable Scarlett O'Hara. Based on the triumphant best-seller "Les Filles de Caleb" by acclaimed Québec author Arlette Cousture, *Emilie* has enjoyed tremendous success all over the world.

MOST LOVED QUEBEC DRAMA
20 X 60'

Blanche

a woman of pride,
passion and destiny



BLANCHE

- ▶▶ Set in the roaring 1920s, Blanche is a passionate woman who desires to fulfill her dreams. Her mission becomes to ease the suffering of those that the Great Depression of the Thirties has left destitute. Blanche also finds true love in the arms of Clovis, a railroad worker.

DRAMA
11 X 60'



C'EST LA VIE

- ▶▶ The eventful life of five funny, intelligent and sexy young adults bound by the sacred ties of friendship. They constantly meet at the café run by one of them; it is their safe haven for when life gets too complicated. The tone of the series is in turn funny, dramatic, quirky and realistic.

DRAMA
39 X 30'



MEN AT 40

- ▶▶ This comedy turns the spotlight on three men: Francis, recently and unwittingly single; Paul, a soft-spoken husband and father; and Renaud, a not-yet-jaded bachelor. Three men, in short, facing the same issues that all men face when they turn 40: health, the meaning of life, faded dreams.

DRAMEDY
25 X 30'

a+traction ▶▶
DISTRIBUTION

5455, DE GASPE AVENUE, SUITE 803
MONTREAL (QUEBEC) H2T 3B3 CANADA
T: +1 514-846-1222 F: +1 514-846-1227
INFO@ATTRACTIONDISTRIBUTION.CA
ATTRACTIONDISTRIBUTION.CA